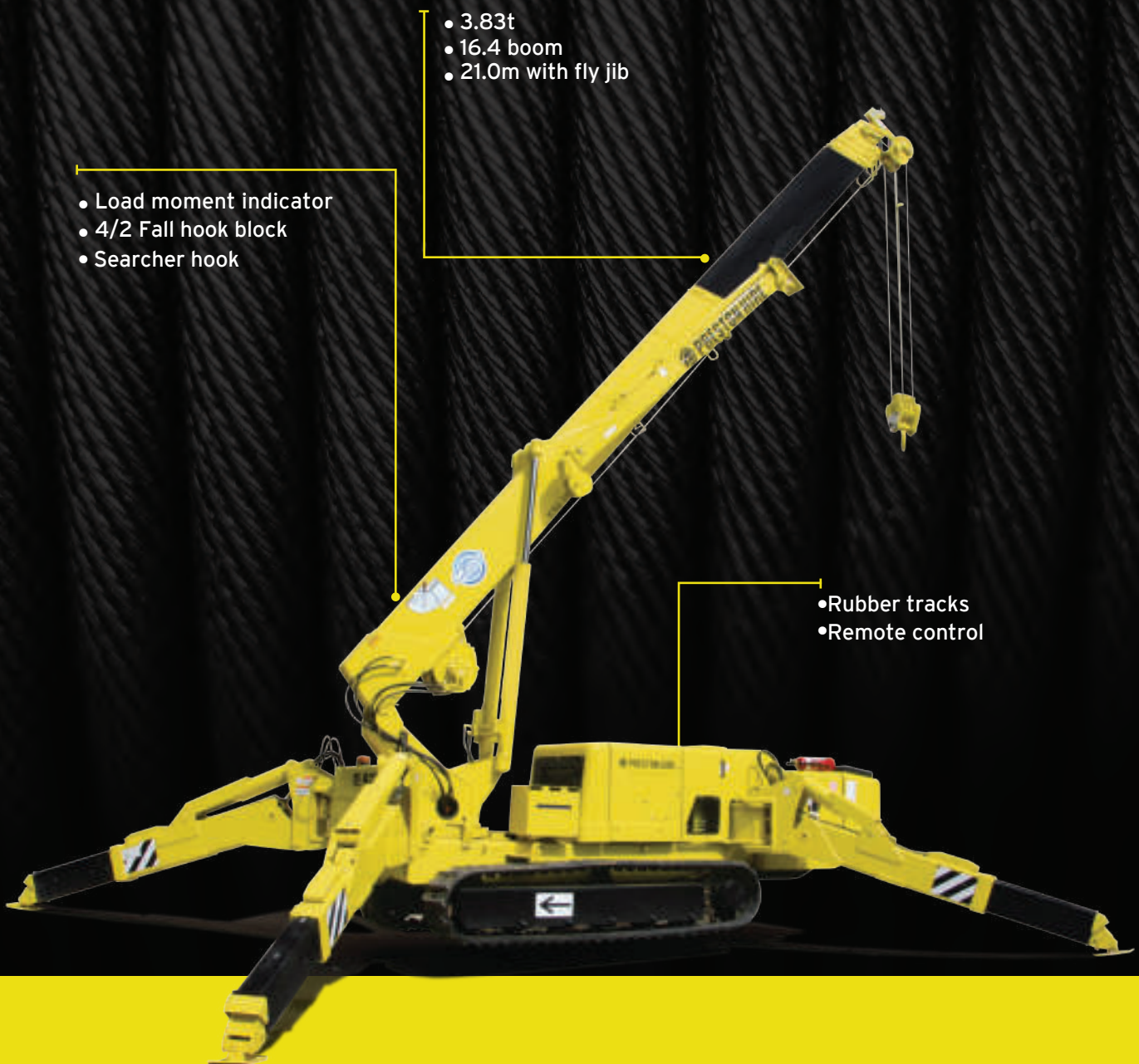


SUPERCRANE™

405



The Preston Hire 405 is the most powerful of the Preston Hire mini crane range with an outstanding 3.83t lifting capacity. The optional fly jib increases the already impressive working range even further. This fantastic model also has a "pick & carry" feature of up to 500kg. Consider the possibilities...



COUNT ON US

1800 440 550 | prestonhire.com.au

SPECIFICATIONS SUPERCRAANE™

405

DIMENSIONS

Length	4980mm
Width	1380mm
Height	1980mm
Weight	5720kg

CAPACITY

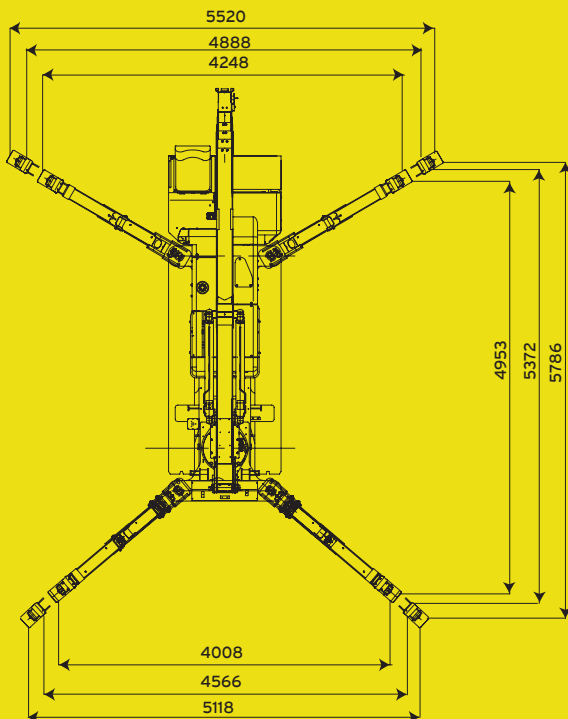
Max. capacity	3830kg at 1.5m
Max. working radius (main boom)	210kg at 16.4m
Max. working radius (fly jib)	170kg at 11.5m
Max. lifting height (main boom)	16.4m
Max. lifting height (fly jib)	21.0m

TRACK

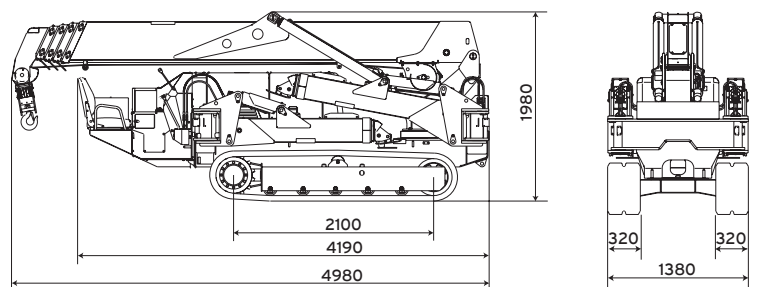
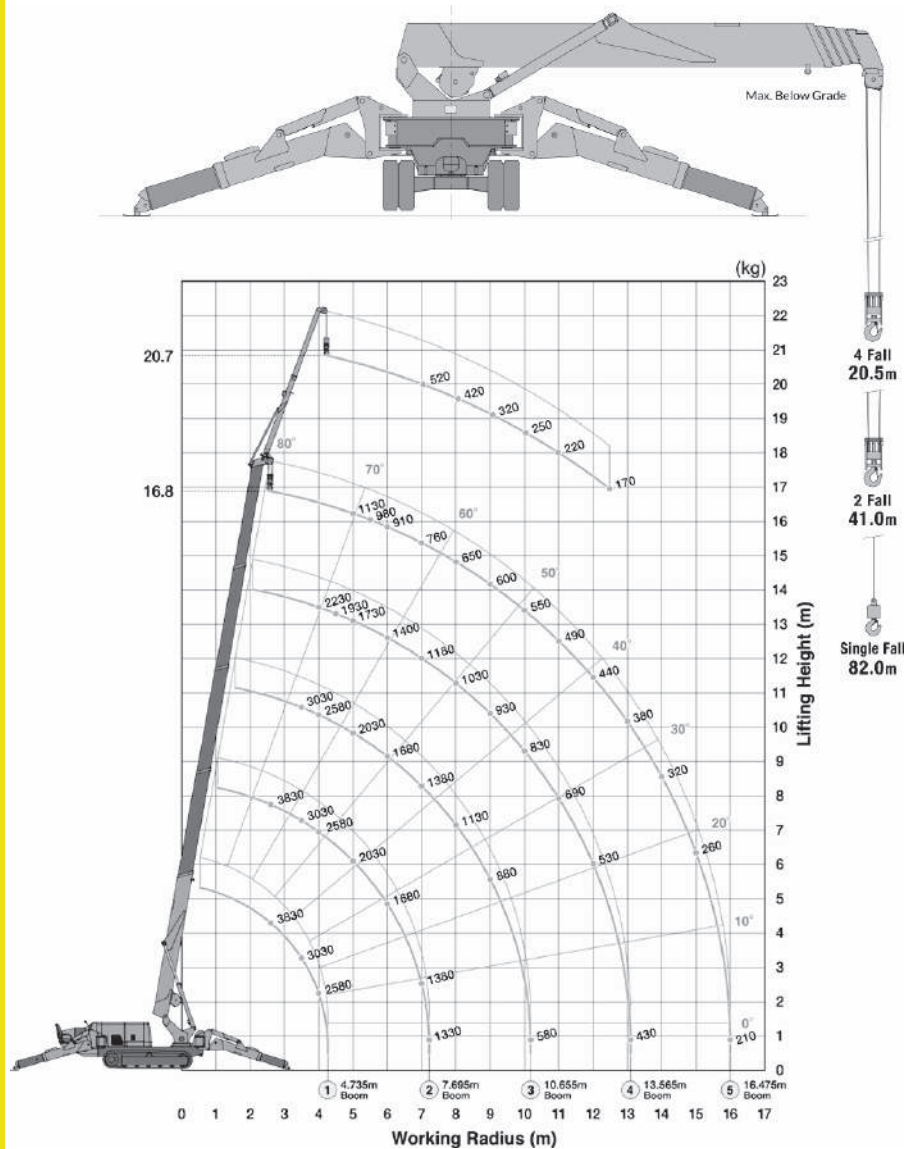
Width	320mm
-------	-------

MIN. TRANSPORT WIDTH

Overall Track	1380mm
Overall Unit	1380mm



WORKING RANGE



COUNT ON US

1800 440 550 | prestonhire.com.au

LOAD CHART SUPERCRANE™

405

LOAD CHART

TOTAL RATED LOAD - OUTRIGGERS AT MAXIMUM POSITION

7.695m Boom		10.655m Boom		13.565m Boom		16.475m Boom	
Working Radius (m)	Total Rated Load (kg)	Working Radius (m)	Total Rated Load (kg)	Working Radius (m)	Total Rated Load (kg)	Working Radius (m)	Total Rated Load (kg)
2.6	3830	3.28	3030	4.0	2230	5.0	1130
3.28	3030	4.0	2480	4.5	1930	5.5	980
4.0	2480	5.0	1980	5.0	1730	6.0	910
5.0	1980	6.0	1660	6.0	1400	7.0	760
6.0	1660	7.0	1380	7.0	1180	8.0	650
7.0	1380	8.0	1130	8.0	1030	9.0	600
7.25	1330	9.0	880	9.0	930	10.0	550
		10.2	580	10.0	830	11.0	490
				11.0	690	12.0	440
				12.0	530	13.0	380
				13.09	430	14.0	320
						15.0	260
						16.0	210

TOTAL RATED LOAD - OUTRIGGERS AT MINIMUM POSITION

7.695m Boom		10.655m Boom		13.565m Boom		16.475m Boom	
Working Radius (m)	Total Rated Load (kg)	Working Radius (m)	Total Rated Load (kg)	Working Radius (m)	Total Rated Load (kg)	Working Radius (m)	Total Rated Load (kg)
2.6	3830	3.28	3030	4.0	2230	5.0	1130
3.28	3030	4.0	2480	4.5	1830	5.5	980
4.0	2580	5.0	1980	5.0	1630	6.0	880
5.0	1680	6.0	1660	6.0	1180	7.0	730
6.0	1180	7.0	880	7.0	830	8.0	530
7.0	930	8.0	730	8.0	680	9.0	450
7.25	780	9.0	580	9.0	550	10.0	420
		10.2	400	10.0	430	11.0	370
				11.0	380	12.0	330
				12.0	350	13.0	280
				13.09	310	14.0	240
						15.0	190
						16.0	150

FLY JIB LOAD CHART

LOAD CHART

Boom Angle (Degrees)	Total Rated Load (kg)
76	520
72	520
69	420
66	320

LOAD CHART

Boom Angle (Degrees)	Total Rated Load (kg)
63	250
60	220
55	170

The total rated load charts are based on the actual working radius including boom



COUNT ON US

1800 440 550 | prestonhire.com.au



SPECIALISED EQUIPMENT HIRE SOLUTIONS

Service Facility Locations

Preston Hire - NSW
 Unit 3,10 Tarlington Place,
 Smithfield, NSW 2164
nswsales@prestonhire.com.au

Preston Hire - ACT
 38 John Bull Street,
 Queanbeyan West, NSW 2620
actsales@prestonhire.com.au

Preston Hire - New Zealand
 563 Rosebank Rd,
 Avondale, Auckland 1026
nzsales@prestonhire.com.au

Preston Hire - QLD
 83 Parramatta Road,
 Underwood, QLD 4119
qldsales@prestonhire.com.au

Preston Hire - VIC/TAS
 38-40 Sunline Dr,
 Truganina, VIC 3029
vicsales@prestonhire.com.au

Preston Hire - WA/NT
 Unit 2,8 Hunt Street,
 Malaga, WA 6090
wasaless@prestonhire.com.au

Preston Hire - SA
 102 Cormack Road,
 Wingfield, SA 5013
sasales@prestonhire.com.au

**Preston Hire available across Oceania*



COUNT ON US

1800 440 550 | prestonhire.com.au