

THE PRESTON HIRE SUPERCRANE™ FLEET Crane Solutions For Every Application.

Service Facility Locations

Preston Hire - North Island
31 Patiki Rd,
Avondale, Auckland 1026
NZSales@prestonhire.co.nz

Preston Hire - South Island
984 Shands Road,
Prebbleton, Christchurch 7676
NZSales@prestonhire.co.nz

Service Areas Including: Queenstown and Dunedin

0800 440 558 | prestonhire.co.nz

YOU CAN COUNT ON PRESTON HIRE

We work incredibly hard at Preston Hire to forge a niche in the market to offer specialised hire solutions for a range of construction needs. From high-rise construction, to mining, government infrastructure and commercial jobs; our core products and services allow us to work closely with our customers to ensure the best equipment is available to them.

We proudly service customers New Zealand wide whilst also having branches in Australia and North America

Our staff are experienced in their field and are focused on our customers whilst upholding the values of the Preston Hire brand. In today's challenging business environment we cannot rest on past performance. Our customers are under pressure and constantly looking for more efficient ways to conduct their business. We are here to help.

I'm proud of my team and the way they continually evolve to keep finding new ways and new products. We are committed to delighting our current customers whilst also enticing new customers to enjoy the benefits our products, services and solutions can provide.

Preston Hire will continue to invest in quality, specialised equipment. Our SuperCrane fleet continues to expand whilst remaining focused on providing unique equipment that is powerful, precise and delivers maximum performance. Talk to our committed team and you will quickly discover that our SuperCrane fleet has a Crane Solution for every application.

We look forward to working with you!"

National Manager | NZ
Francois Buys



2 MAJOR BRANCHES
NEW ZEALAND

INCLUDING SERVICE AREAS:

- QUEENSTOWN
- DUNEDIN

50+
YEARS OF EXPERIENCE

5
EMPLOYEES

15
MINI CRAWLER
CRANES

1
HYDRAULIC
CRAWLER CRANES

2.8t - 40.0t CAPACITY RANGE OF
CRANES IN FLEET



OUR SUPERCRANE FLEET

The construction sector and the crane hire market continues to demand specialised cranes. Projects are becoming increasingly involved which increases the number of challenges customers face and the need for specialised equipment to provide solutions. Today's projects require cranes with smaller footprints yet with the expectation for the same loads to be lifted. Customers are looking for larger capacities from smaller cranes to manage their lifting plans. Preston Hire is embracing these challenges by continuing to invest in the right cranes which will play integral roles in construction solutions for the future.

The SuperCrane fleet is made up of Maeda, UNIC and Sennebogen machines in various models and capacities. Each machine has been carefully selected based on its unique abilities, quality craftsmanship and the benefits it can provide to a broad range of disciplines. Our fleet includes SpiderCranes and Hydraulic Crawler Cranes.

OUR SERVICES

Beyond our equipment, Preston Hire provides additional services to customers to extend our offering including detailed lift studies, lift engineering, lift plans and crane attachments. Offering these services to customers demonstrates the importance of these additional resources from both a customer service and importantly a safety point of view.

Services provided by Preston Hire relevant to our SuperCrane fleet include:

- Various attachments including an extensive range of Glass-Lifting Rigs to service more sectors.
- Lift Studies
- Lift Plans
- Access to software programs including Maeda and Unic OEM outrigger reaction programs, Cramimax, Liccon Lift Planner and Autocad
- Wet and Dry Hire

FLEET MANAGEMENT SYSTEM

Preston Hire has partnered with Teletrac Navman across our SuperCrane fleet, specifically using their Construction Asset Utilisation system. Telematics provides insightful data and allows us to share information with our customers that provide learnings, improvements and allow all of us to plan more effectively.

Our partnership with Teletrac Navman started in 2017 following a highly successful trial of in-vehicle unit installations. The software was quickly installed across the entire SuperCrane fleet allowing crane tracking abilities including movement and on-site activity. The technology provides access to a range of data, such as work hours and the condition of internals enabling the team to stay on top of maintenance, safety and continued delivery of great customer service.

FLEET CAPABILITY

Capacity (t)	Make/Model
2.82	Maeda 285
2.98	Maeda 305
3.83	Maeda 405
8.09	Maeda 815
2.93	Unic 295
4.05	Unic 547
3.03	Unic 376
6.0	Unic 706
40.0	Sennebogen

643

SURPRISINGLY VERSATILE

Location: Christchurch, South Island

Machine: SuperCrane 295



PROVEN TO BE POSSIBLE!

Location: Christchurch, South Island

Machine: SuperCrane 295



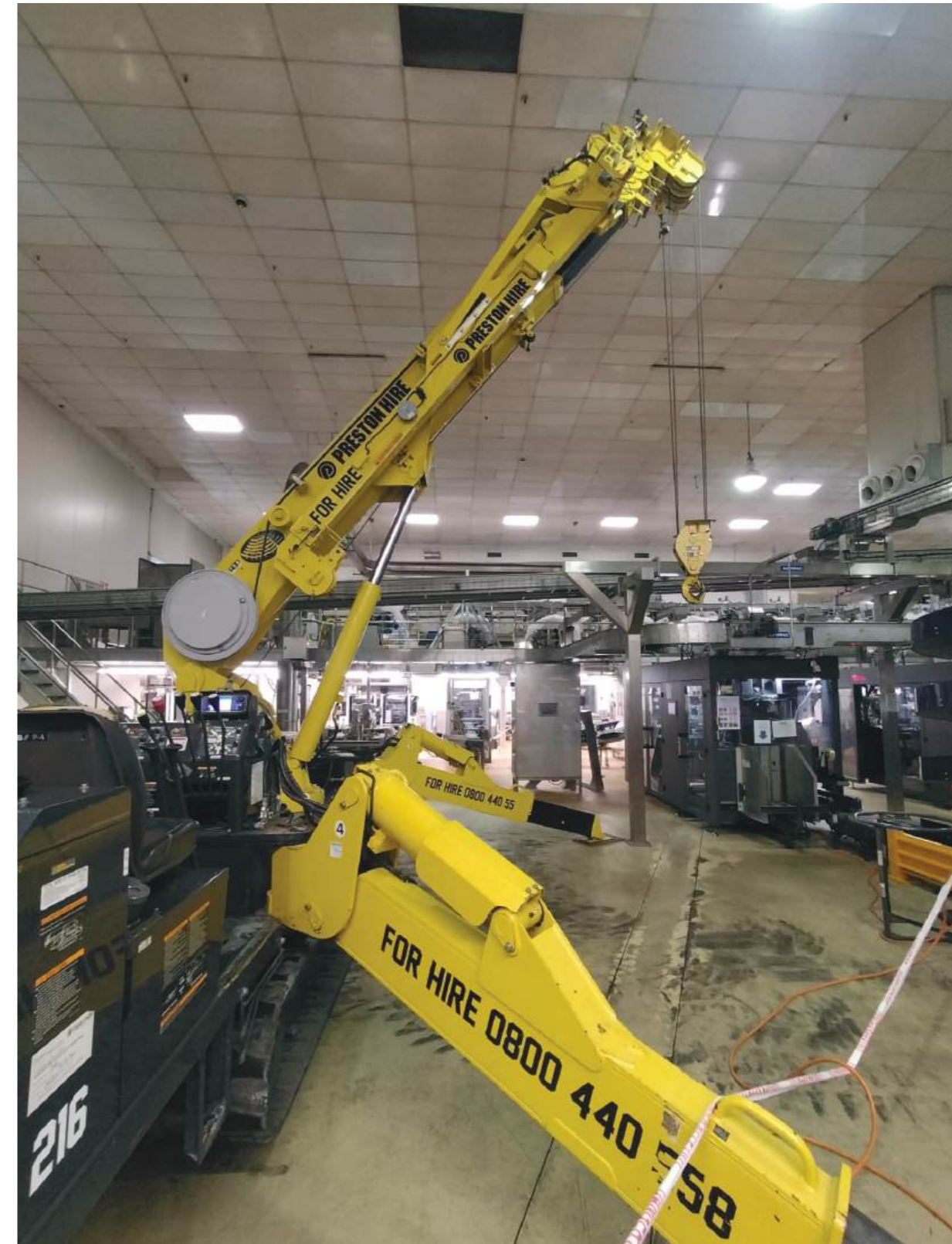
ONLY THE BEST WILL DO!

Location: Auckland, NZ
Machines: SuperCrane 405



IN SAFE HANDS

Location: Auckland, NZ
Machine: SuperCrane 706



RAISING THE BAR

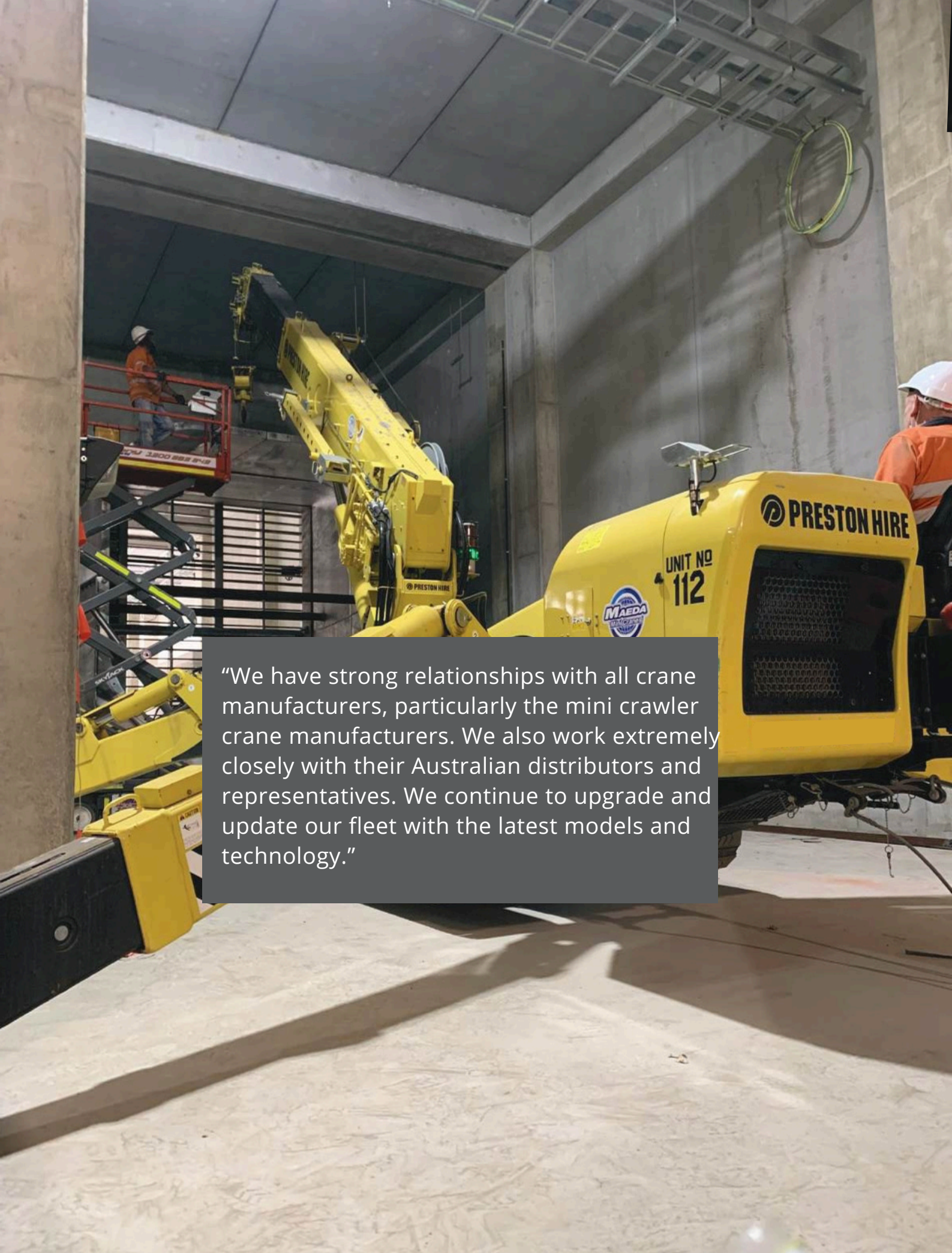
Location: Auckland, NZ
Machines: SuperCrane 815



LIFTING STONES

Location: Auckland, NZ
Machine: SuperCrane 305





"We have strong relationships with all crane manufacturers, particularly the mini crawler crane manufacturers. We also work extremely closely with their Australian distributors and representatives. We continue to upgrade and update our fleet with the latest models and technology."



Nothing we can't reach.

Explore our **SuperCrane™** fleet to find the solution for your next project:

Suitable For:

Piling | Roads | Glazing | Steel Fabrication | Concreting | Sport | Rail
Government | Painting | Lighting | Infrastructure | Tree | Logging
Residential | Maritime | Fire | Engineering